



ALLIED MAKER

MADE IN NEW YORK

Concentric Trio Ensemble

Installation Guide

212-334-7333

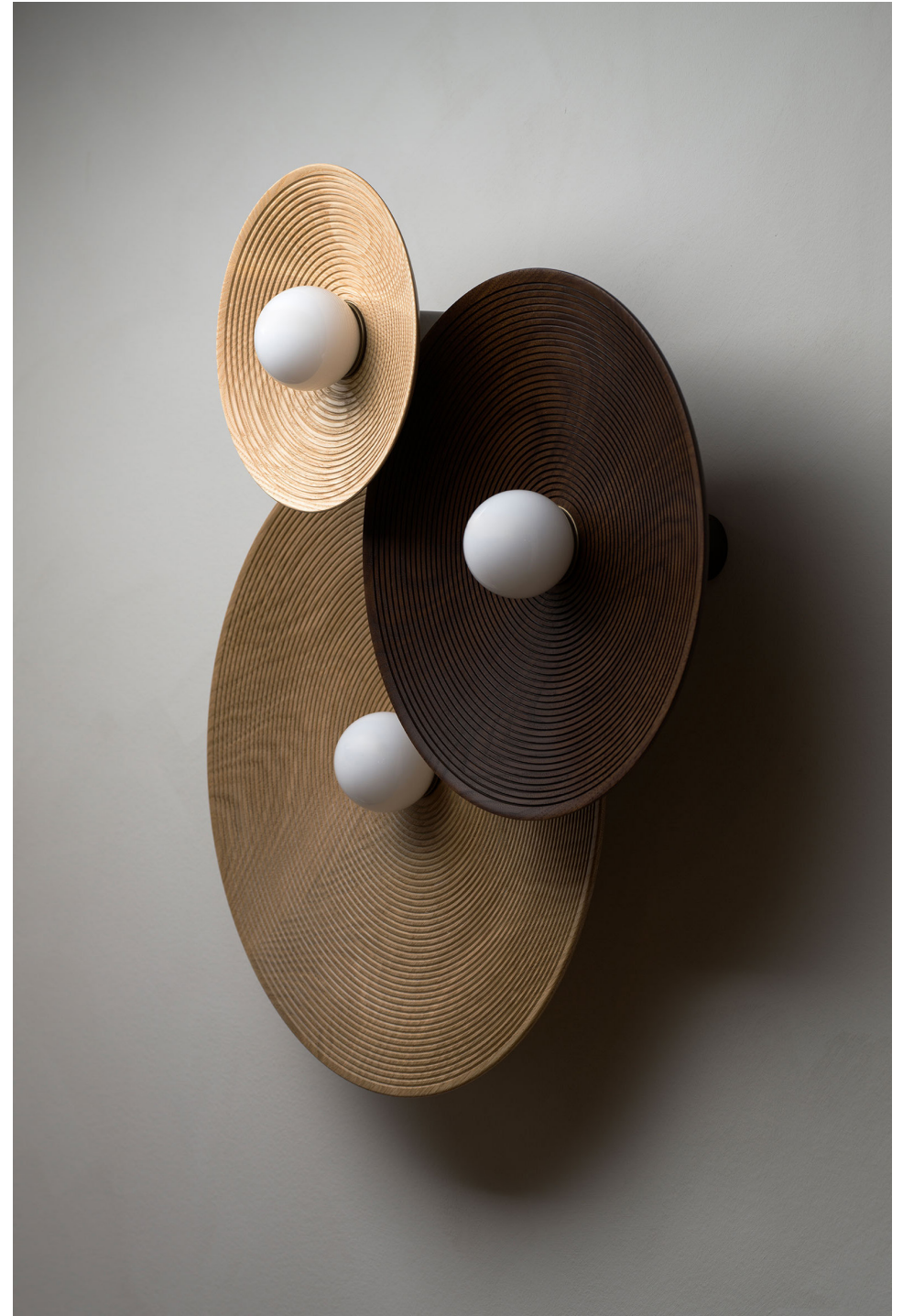
help@alliedmaker.com

LIVING FINISHES


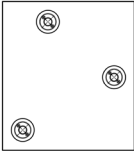



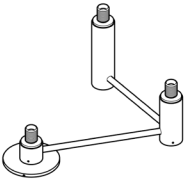
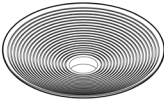

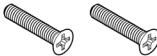

Wear Gloves!



THIS PRODUCT MUST BE INSTALLED IN ACCORDANCE WITH THE APPLICABLE
INSTALLATION CODE BY A PERSON FAMILIAR WITH THE CONSTRUCTION AND
OPERATION OF THE PRODUCT AND HAZARDS INVOLVED



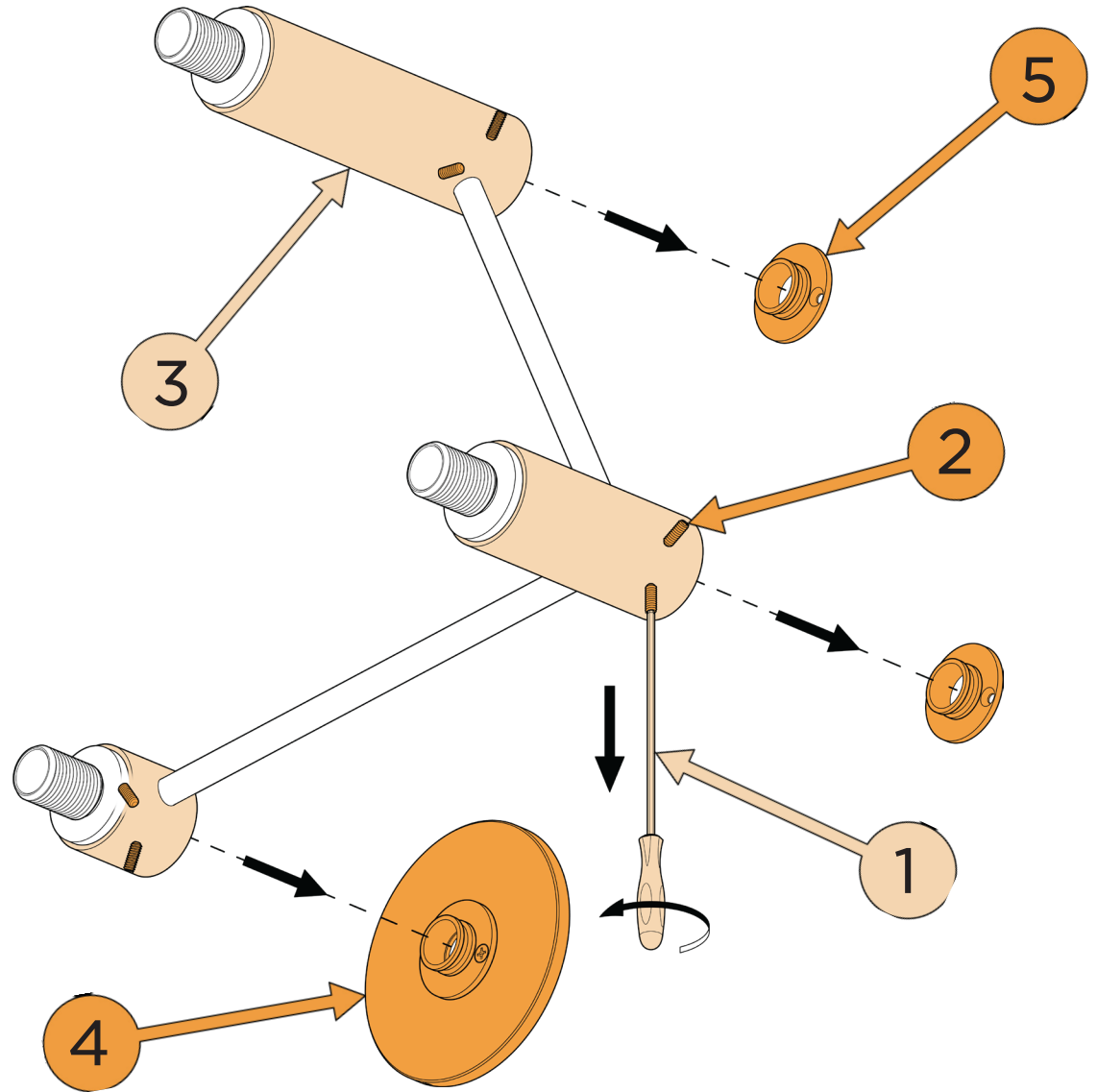
Contents Included

 <p>3x Adapter</p>	 <p>Backplate Template</p>	 <p>3x Light Bulb</p>	 <p>4x Wood Screw</p>	 <p>3/32 Hex Driver</p>
 <p>Lighting Fixture</p>	 <p>3x Shade</p>	 <p>3x Glass</p>	 <p>2x Phillips Screw</p>	 <p>1/16 Hex Driver</p>

1

Using the provided 3/32 hex driver ①
loosen the six set screws ②
in the lighting fixture bodies ③

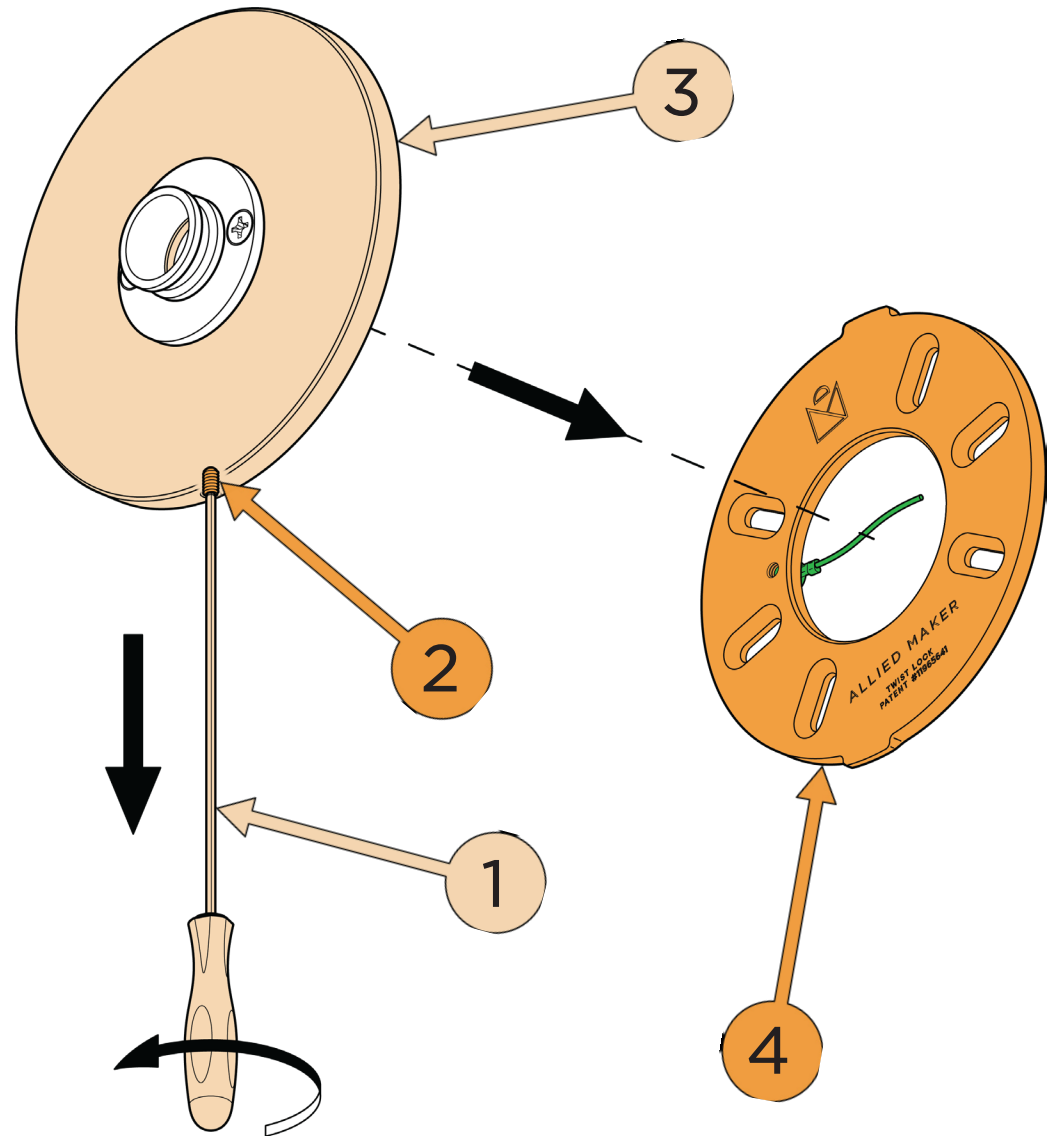
Remove the canopy ④
and the mounting plates ⑤



2

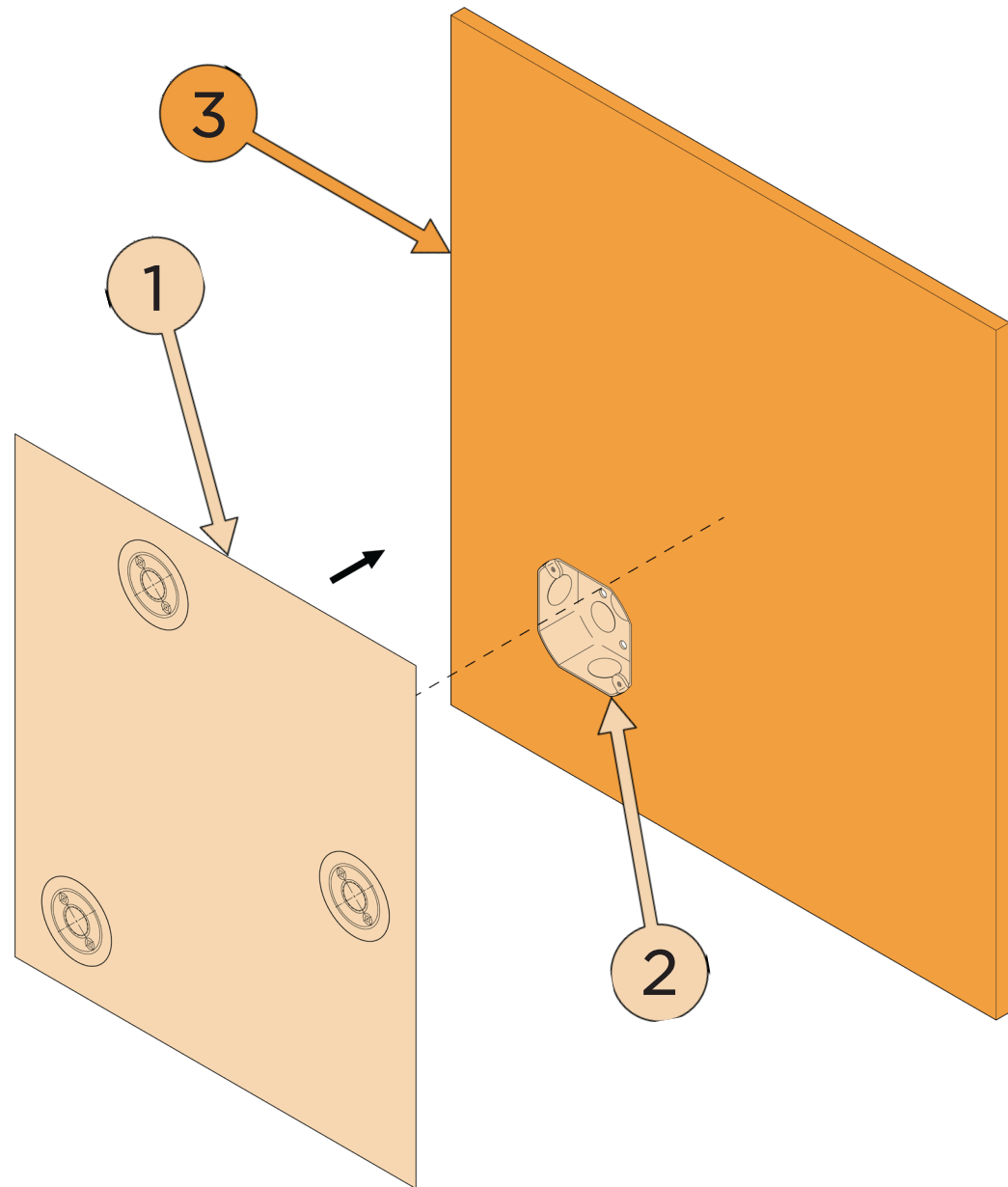
Using the provided 1/16 hex driver **①**
loosen the set screw **②**
in the canopy **③**

Remove the backplate **④**



3

Place the **backplate template** ①
over the **junction box** ②
and onto the **wall** ③
and hold in place.

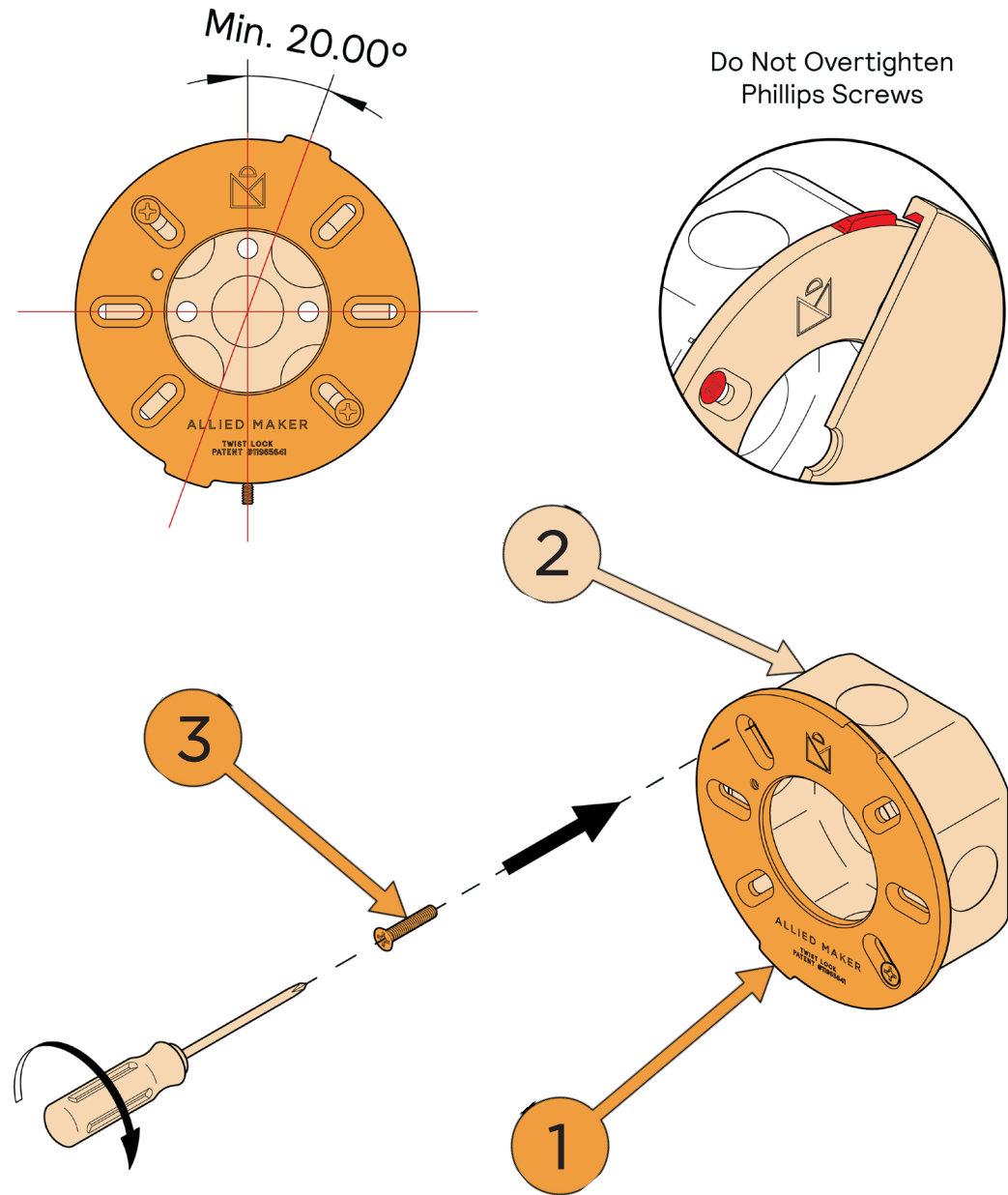


4

Mount the backplate ① onto the junction box ② using the provided phillips screws ③

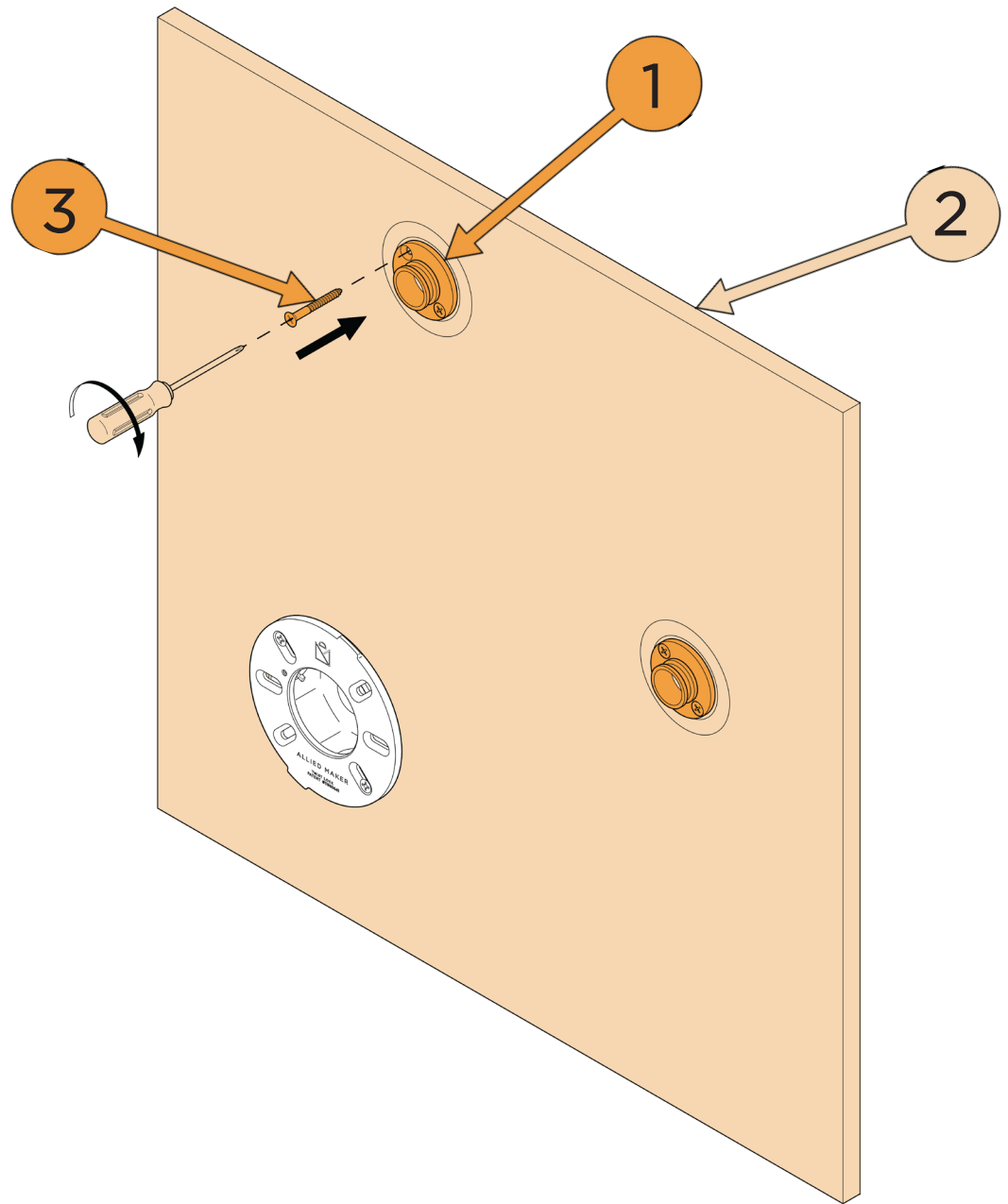
NOTE: Make sure the two tabs on the backplate are rotated to a minimum of 20° from the intended mounting alignment. This will ensure the set screw has enough space to fully secure the canopy and backplate into place.

CAUTION: Do not overtighten the phillips screws. Overtightening will prevent the two tabs on the backplate from engaging with the channel inside the canopy.



5

Mount the mounting plates ①
onto the wall ②
using the provided wood screws ③



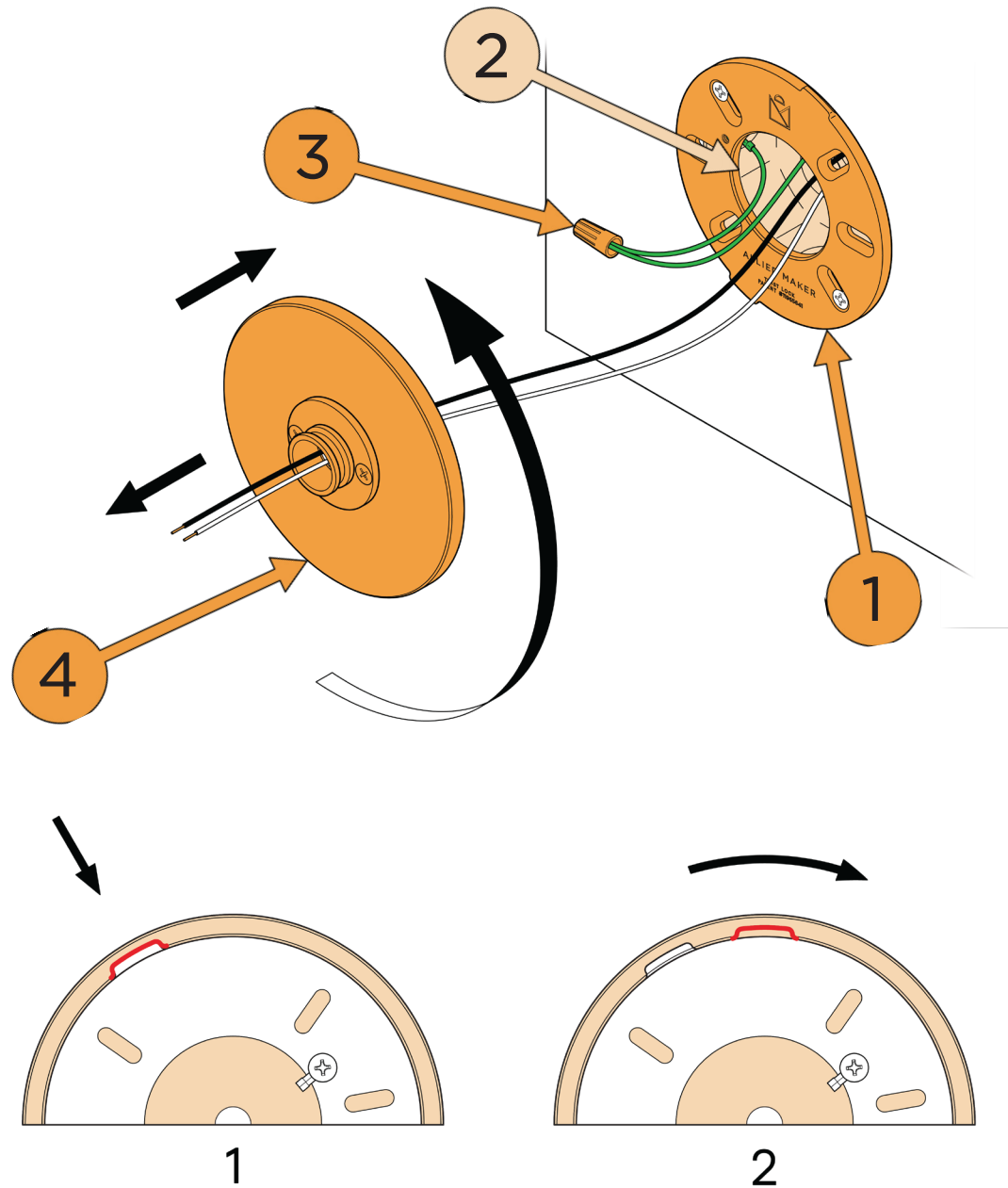
6

Connect the ground wires from the **backplate** ① and **junction box** ② together using a **wire nut** ③

Travel the wires through the **canopy** ④

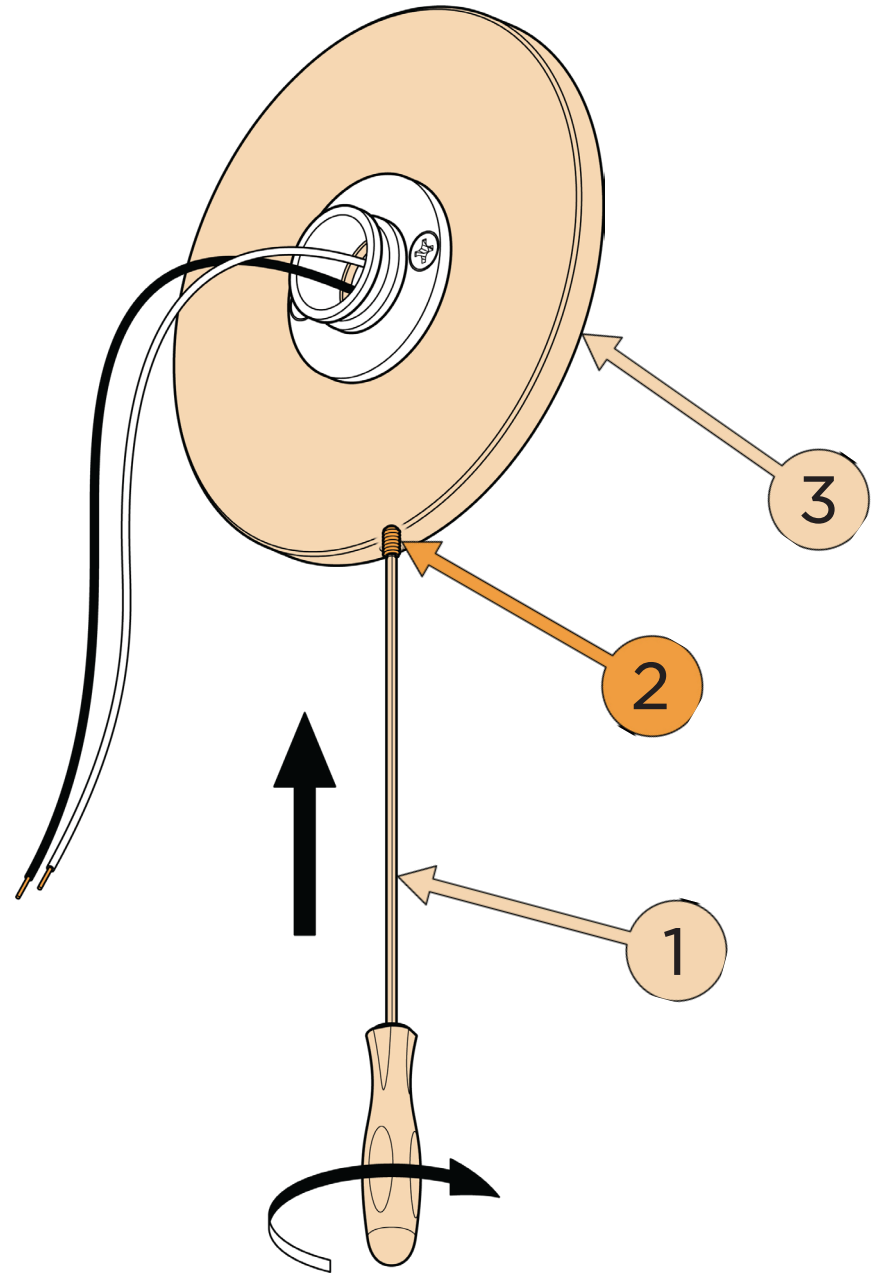
Align the tabs on the **backplate** ① with the tab openings on the **canopy** ④

Place the **canopy** ④ over the **backplate** ① and rotate the **canopy** ④ to the desired position.



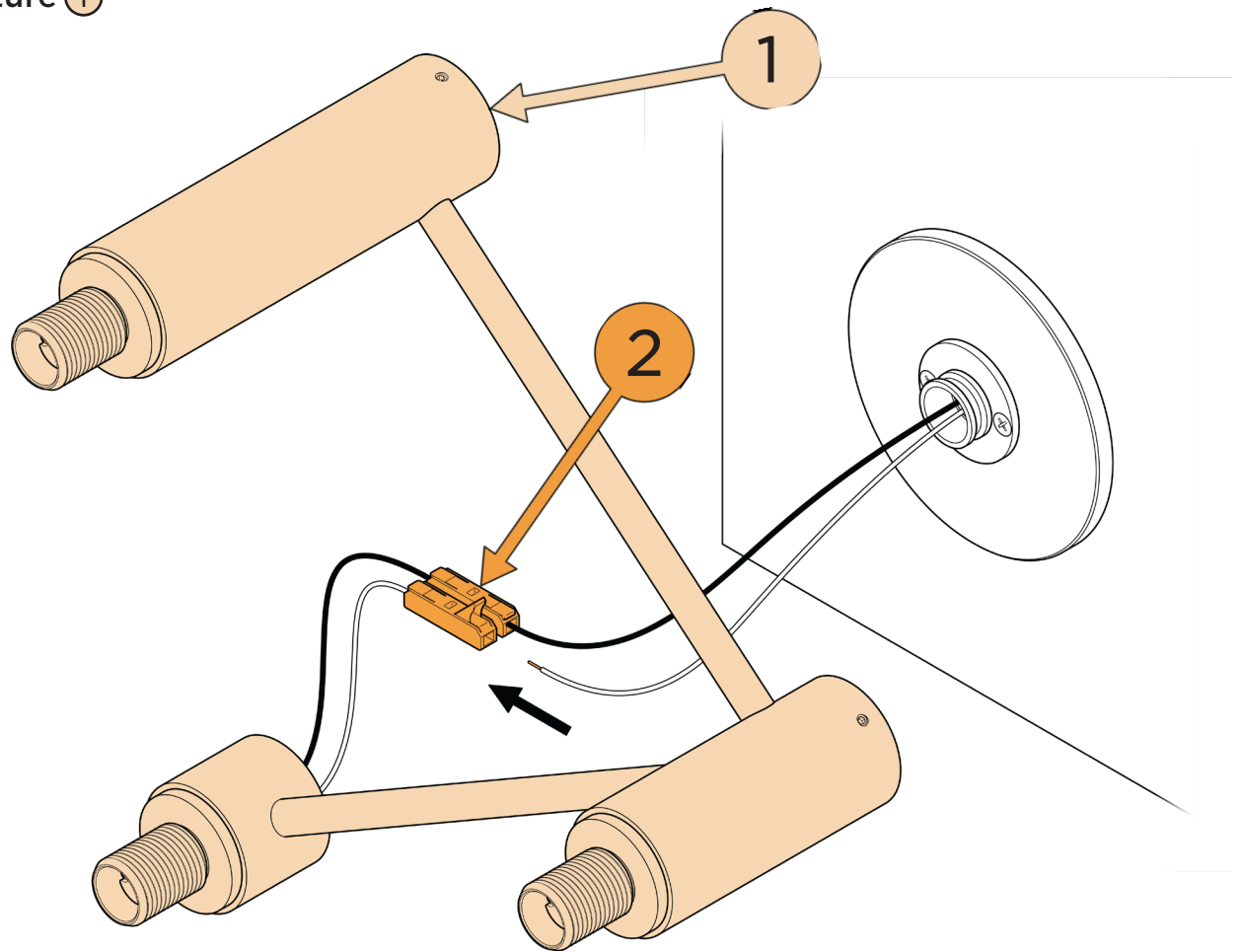
7

Using the provided 1/16 hex driver ①
tighten the set screw ②
in the canopy ③
to secure the canopy ③ into place.



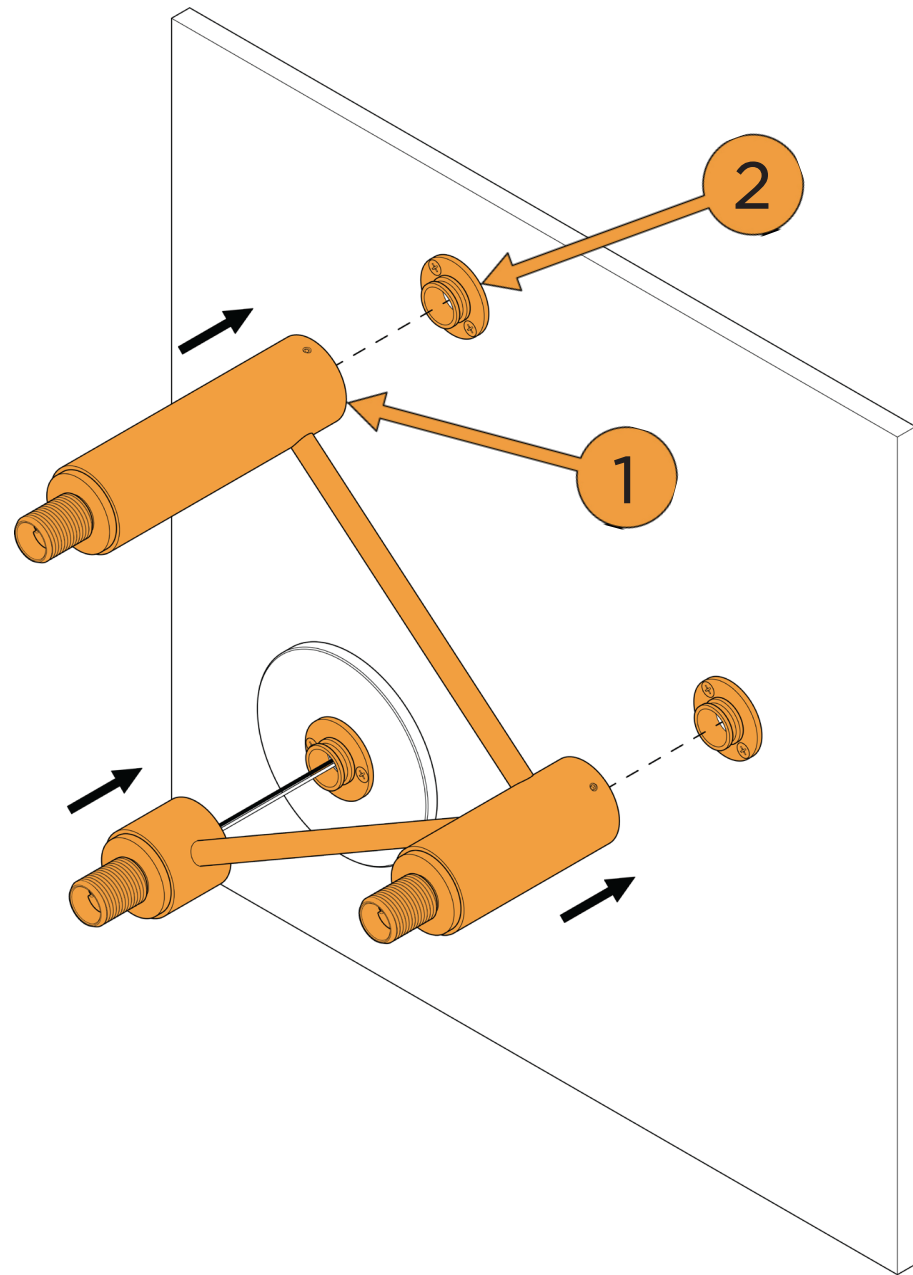
8

Connect the wires from the **lighting fixture** ①
with the wires from the junction box
using the **wago clips** ②



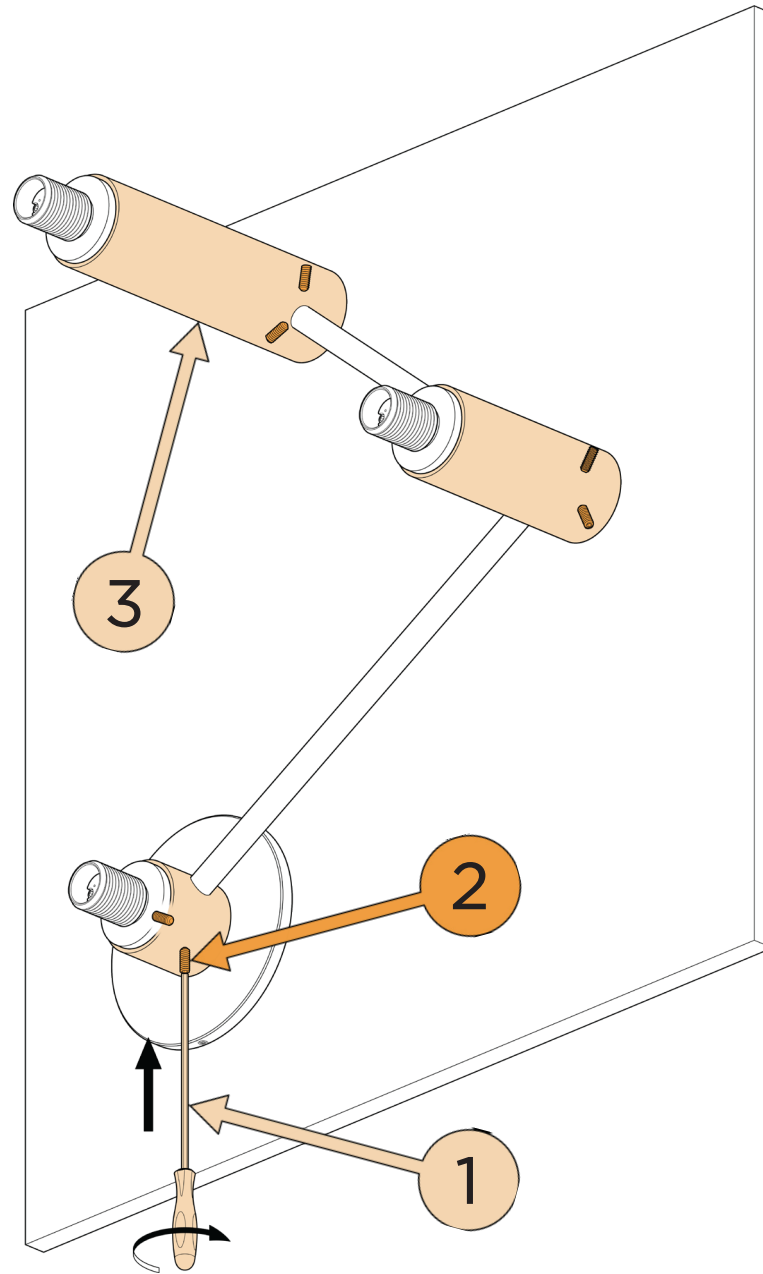
9

Insert the **lighting fixture** ①
over the three **mounting plates** ②
and hold in place.



10

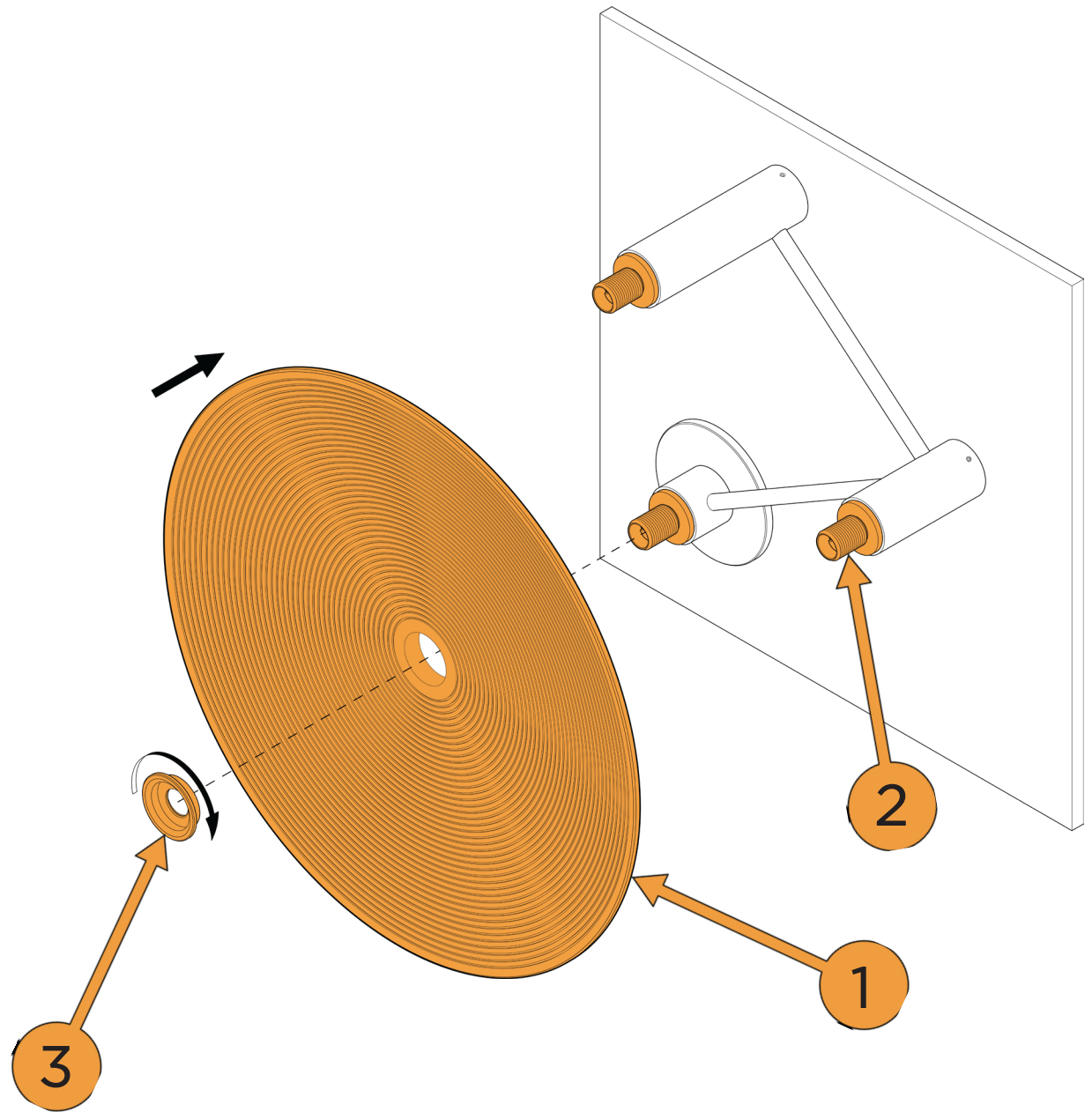
Using the provided 3/32 hex driver ①
tighten the six set screws ②
in the lighting fixture bodies ③
to secure the lighting fixture into place.



11

Place the shades ①
over the socket covers ②
and hold in place.

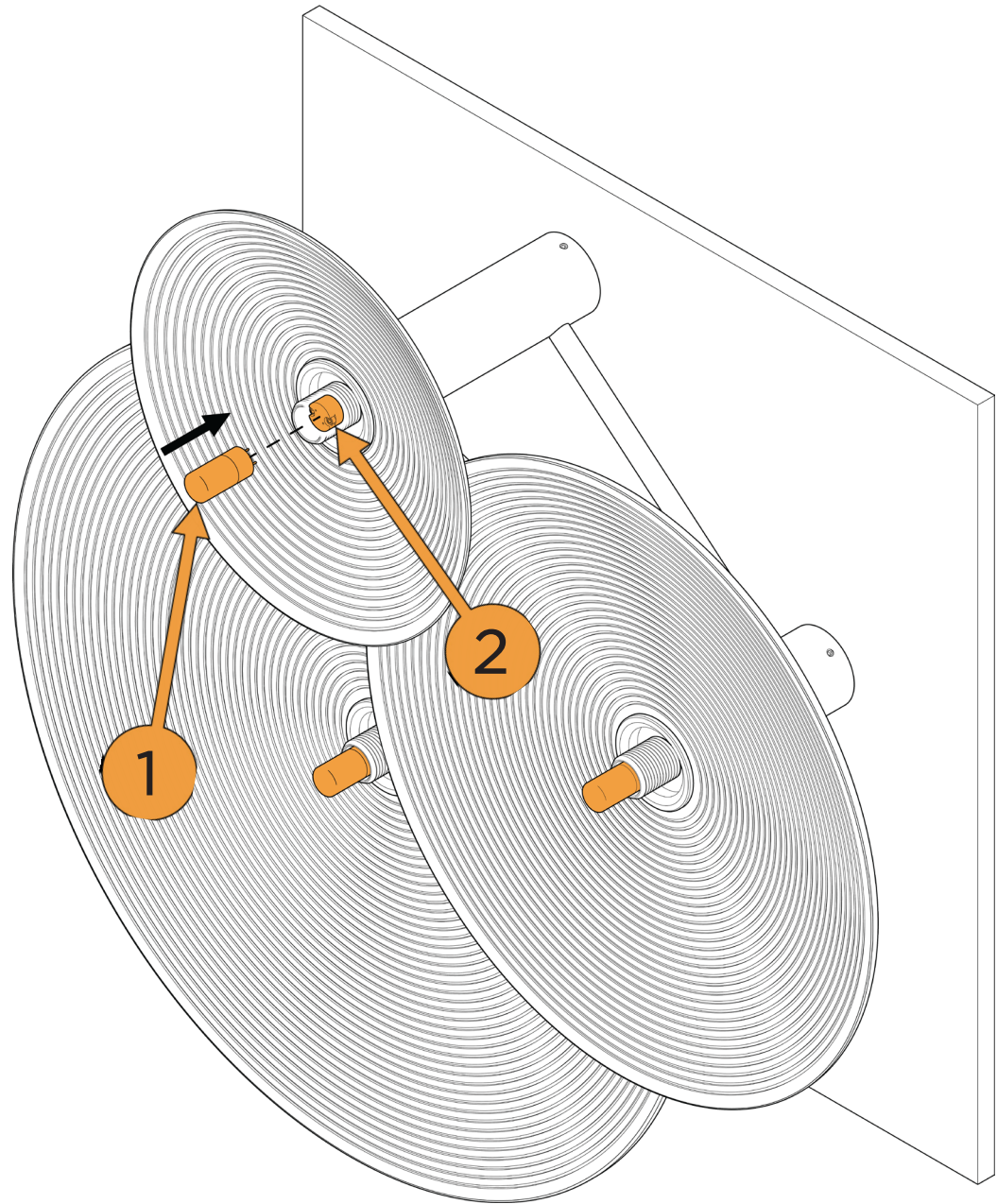
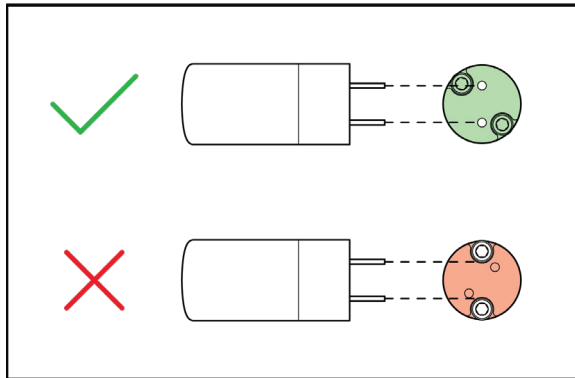
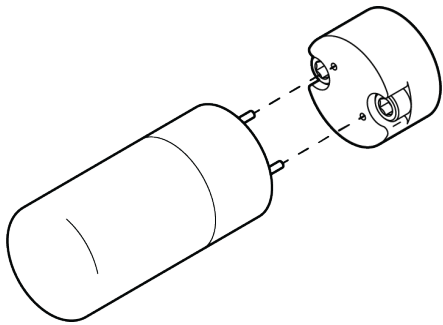
Screw the adapters ③
onto the socket covers ②
to secure the shades ① into place.



12

Insert the light bulbs ①
into the fixture sockets ②

CRITICAL: Align pins with
pin holes, then push in.



13

Screw the glass ①
onto the socket covers ②

CAUTION: Align threads properly
for a smooth rotation before
twisting to avoid jamming.
Do not overtighten the glass.

